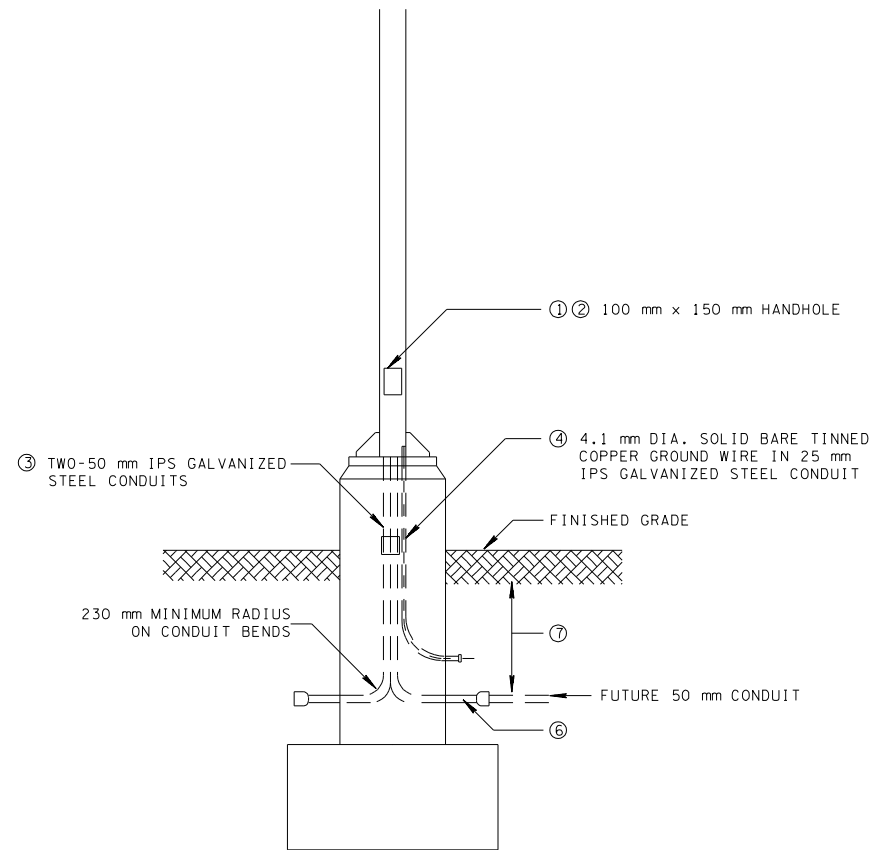
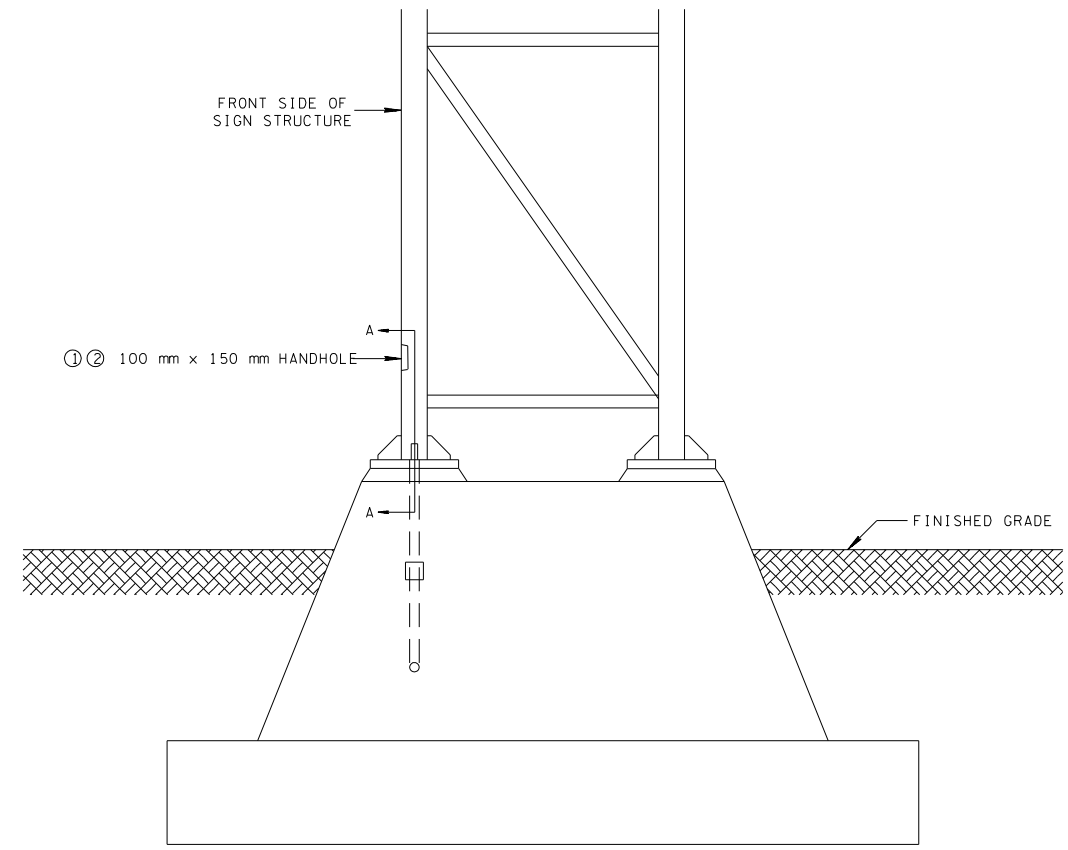


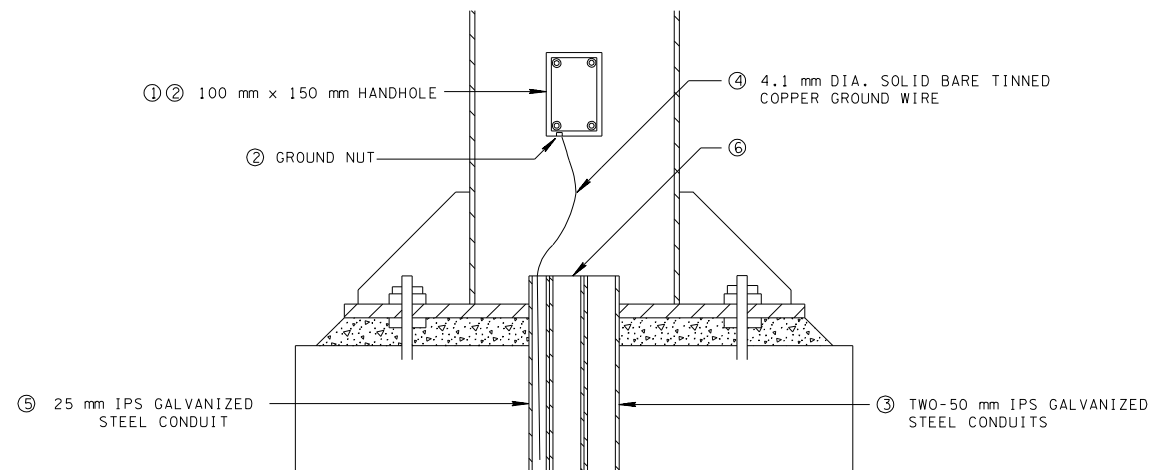
REC/TOOT CAD DWG	INITIAL MARKUP	REVIEW MARKUP	REC		TO REVIEW		TRANS		FINAL		TRANS		
			CAD	CAD DWG	CAD	CAD DWG	CAD	CAD DWG	TOOT	COMMENTS	CAD	REVIEW	FINAL
1-4-95	G.N.	-	M.M.	J.W.	M.R.	F.S.							
	1-19-95		1-19-95	2-3-95	2-8-95	3-2-95		3-10-95					



FRONTAL VIEW



SIDE VIEW



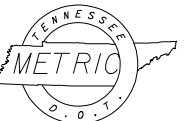
SECTION A-A  
(SECTIONAL VIEW OF OVERHEAD OR CANTILEVER SIGNS)

## FOOTNOTES

- ① A 100 mm x 150 mm HANDHOLE WITH REINFORCED FRAME AND COVER LOCATED NOT MORE THAN 300 mm ABOVE THE ANCHOR BASE SHALL BE PROVIDED IN THE FRONT FACE OF THE FRONT POST MEMBER OF THE BUTTERFLY STRUCTURE AND IN THE FRONT POST MEMBER OF THE RIGHT HAND SUPPORT ON OVERHEAD SIGN STRUCTURES. STAINLESS STEEL ALLEN-HEAD SCREWS SHALL BE USED TO SECURE HANDHOLE COVER TO FRAME, AND NO SUBSTITUTIONS WILL BE ACCEPTED.
- ② THE HANDHOLE FRAME SHALL BE DRILLED AND TAPPED TO ACCOMMODATE A M13 GROUNDING STUD OR SHALL HAVE A M12 NUT WELDED TO THE FRAME.
- ③ TWO - 50 mm IPS GALVANIZED STEEL CONDUITS SHALL BE INSTALLED IN EACH POST MEMBER HAVING A HANDHOLE. CONDUITS SHALL EXTEND 50 mm ABOVE TOP OF CONCRETE AND 300 mm MINIMUM INTO THE EARTH. BOTH ENDS SHALL BE THREADED AND CAPPED WITH GALVANIZED STEEL CONDUIT BUSHING AND PENNY.
- ④ ONE 4.1 mm DIA. SOLID BARE TINNED COPPER GROUND WIRE SHALL BE INSTALLED IN THE 25 mm IPS GALVANIZED STEEL CONDUIT AND CONNECTED TO THE GROUNDING NUT. 600 mm OF EXCESS WIRE SHALL BE LEFT AT TOP OF CONCRETE AND IN EARTH.
- ⑤ ONE 25 mm IPS GALVANIZED STEEL CONDUIT SHALL BE INSTALLED IN THE RIGHT HAND SUPPORT FOUNDATION FOR THE GROUND WIRE.
- ⑥ THE 50 mm IPS GALVANIZED STEEL CONDUITS ARE TO BE THREADED AND CAPPED FOR FUTURE USE IN LIGHTING SIGNS.
- ⑦ DEPTH TO BE A MINIMUM OF 600 mm AND MAXIMUM OF 900 mm.



3/21/2007 11:11:57 AM  
 \$\$\$DGN\$PEC\$\$\$



ALL UNITS ARE IN MILLIMETERS  
UNLESS NOTED OTHERWISE.

MINOR REVISION -- FHWA  
APPROVAL NOT REQUIRED.

STATE OF TENNESSEE  
DEPARTMENT OF TRANSPORTATION

# STANDARD CONDUIT & GROUND DETAILS FOR OVERHEAD & CANTILEVER SIGN STRUCTURES

11-1-95	TM-S-15
---------	---------